

NORDIC

POU Water Cooler

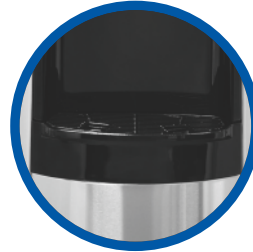


Another addition to the Crystal Mountain family of Point of Use coolers. The stainless steel fingerprint proof cabinet of the Nordic adds class to any environment. Available in Hot/Cold and Room Temperature/Cold. The Nordic design is robust and dependable making it the best value stainless steel cooler in the business.

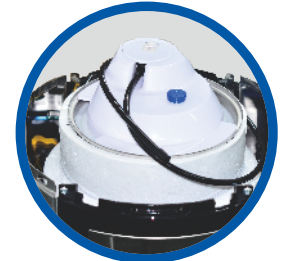
Nordic: Hot & Cold



Hot Water Functioning Pilot Lamps



Removable drip tray



POU Kit

ITEM

SPECIFICATIONS

Power rating		Single phase
		100-115VAC 60Hz
Standard current		HOT & COLD: 4.5-5.1A
Power	Cold	85W
Consumption	Hot	500W
Cold	Compressor	Single phase motor
	Refrigerant	R134a
	Temp range	5-10°C (41-50°F)
	Capacity	3.7L (1.0 gal)
Hot	Heater	Band heater
	Temp range	Bimetal thermometer
	Temp control	176-203°F (80-95°C)
	Capacity (External Heater)	1.5L (0.32 gal)
Refrigerant charge		1.16oz (33g)
Product weight		HOT & COLD: 11.36kg (25 lb)
Product boxed weight		HOT & COLD: 12.98kg (28.6 lb)
Product dimensions		320(W) X330(D) X980(H)mm 12.6"(W) X 13"(D) X 38.6"(H)
Product boxed dimensions		350(W) X 360(D) X 1020(H)mm 13.8"(W) X 14.2 "(D) X 40.2"(H)
Loading quantity		20' Container: 192Units 40' Container: 408Units
IEC protection class		Class 1
Certifications		C-ETL-US
Warranty		One year