

Service Bulletin

Change to Auto Reset Limiter

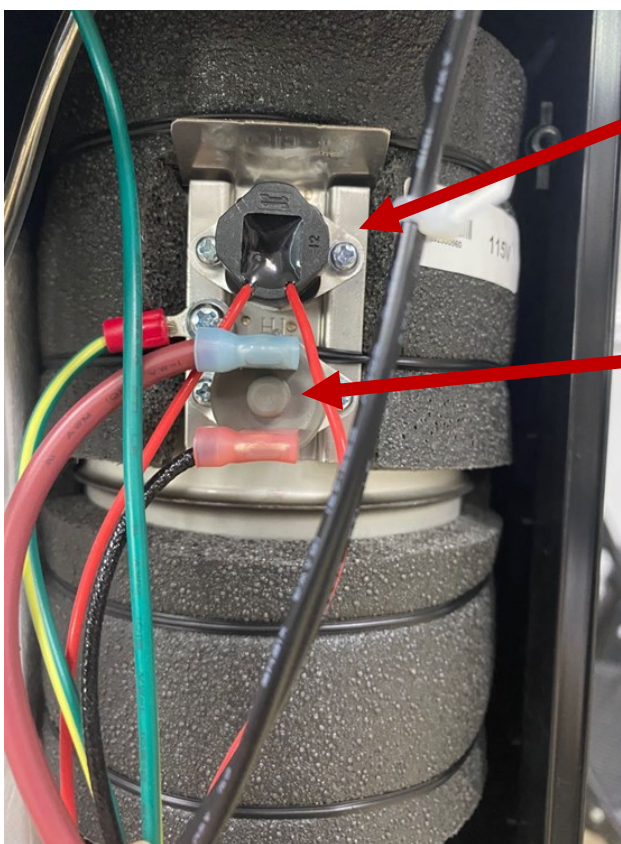
From Manual Limiter—Storm Family

Form 2010001

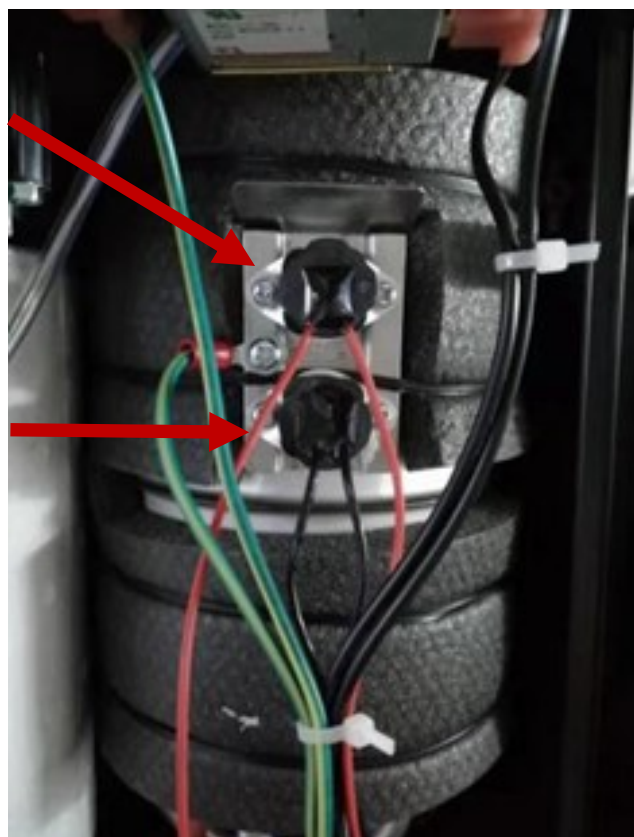


As part of its policy of continuous improvement, Crystal Mountain is changing the limiter used on the Storm family of coolers hot tanks. Previously the Storm coolers used an ELE-C100170 manual reset limiter to protect the hot tank against overheating and dry boil situations. Now, the hot tanks used on the Storm will have this limiter replaced by the ELE-C100502 Auto Reset Limiter on new production. This use of this new control will help to reduce the number of service calls for limiters that are nuisance trips. In addition to the change to an auto reset from a manual reset limiter, the new control will have the wiring sealed similarly to the thermostats used over the last several years.

Old Hot Tank with Manual Reset Limiter



New Hot Tank with Auto Reset Limiter



Crystal Mountain Products, Inc • 1000 H Taylor Station Rd • Gahanna OH 43230

614.454.1618 • www.crystalcoolers.com

© 2020 Crystal Mountain Products Inc.