

**Installation Instructions**  
**Four stage Reverse Osmosis System**  
**Part# FIL-W300002**  
**Form 1611002**



Crystal Mountain Products, Inc · 1000H Taylor Station Rd · Gahanna OH 43230

614.454.1618 · [www.crystalcoolers.com](http://www.crystalcoolers.com)

© 2016 Crystal Mountain Products Inc.

Form 201611002

# Installation Instructions: Four Stage Reverse Osmosis System

FIL-W30002

## Installation Instructions:

Your FIL-W30002 kit includes a Four Stage Reverse Osmosis Filter System with installation hardware. Crystal Mountain Products Inc. is not responsible for any damage that may occur during the installation of this kit. These instructions are for informational purposes only and the kit should only be installed by a trained technician.

### Included in this kit:

Four Stage Reverse Osmosis Kit Pt# FIL-W300002



2x Filter Mounting Clips Pt# POU-A300003



75 GPD TFC Membrane Pt# FIL-W300006



2x Mounting Screws Pt# FAS-W300001



1/4" Quick Connect Plug Pt# POU-A300002



Installation Tubing Pt# POU-A300004



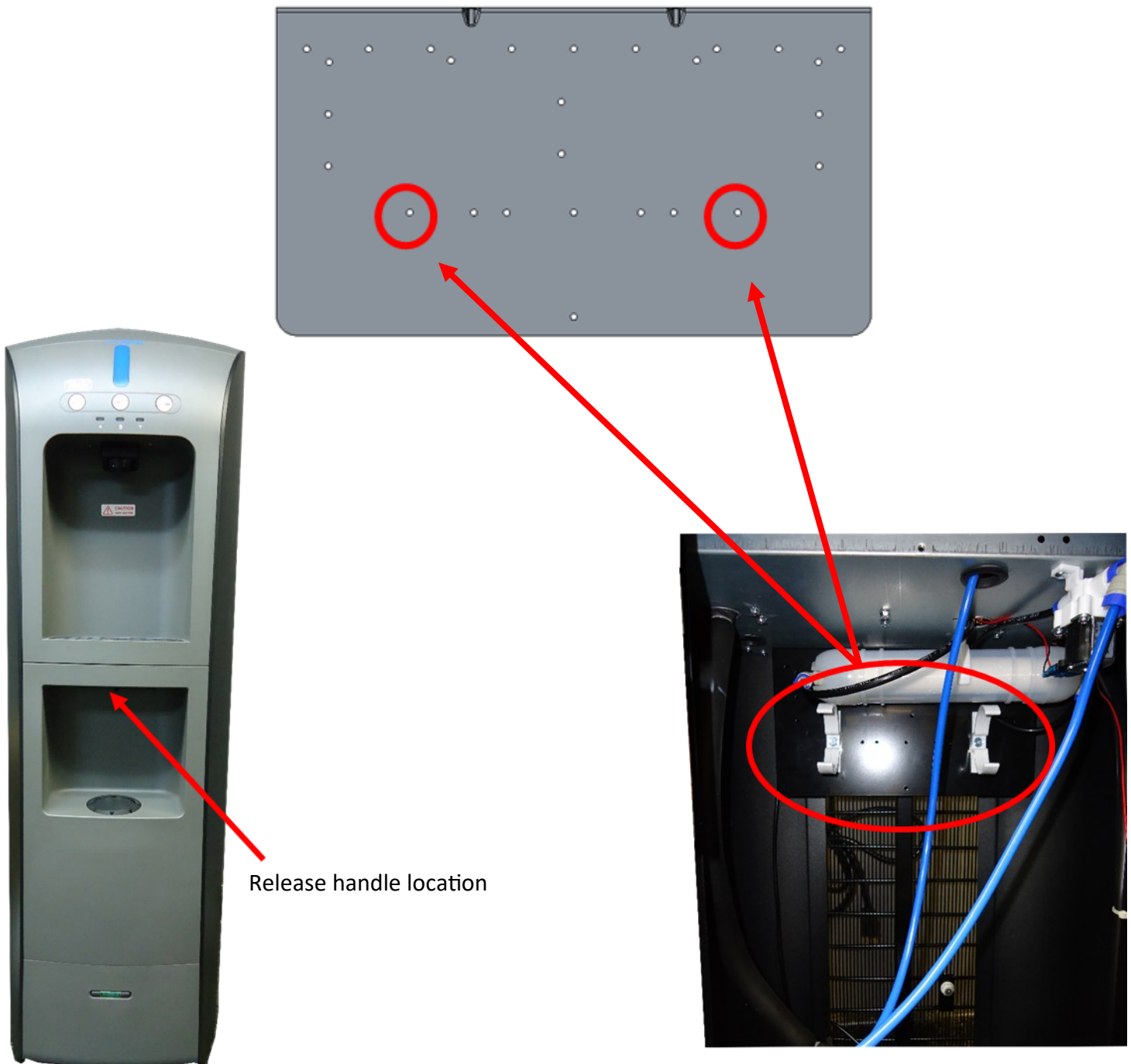
1/4" Quick Connect Locking Clip Pt# POU-A300001



## Installation Instructions: Four Stage Reverse Osmosis System

FIL-W30002

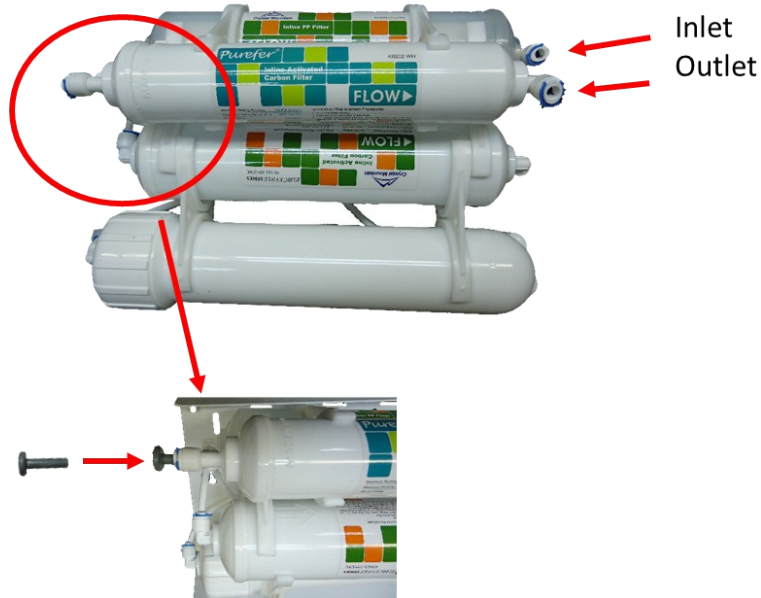
1. Remove the Crystal Pro watercooler and the FIL-W30002 filter kit from the packaging. Remove the filter access door by pulling on the release handle located just below the drip receptor.
2. Install the filter mounting clips with the screws supplied with the kit. For best results use the mounting holes on the Crystal Pro filter mounting plate as shown below.



## Installation Instructions: Four Stage Reverse Osmosis System

FIL-W30002

3. Remove the Reverse Osmosis kit from the metal bracket (the bracket is not used for this installation) and fold the filters as shown below. Be sure that the 1/4" plug is installed in the tee fitting on the smaller diameter post filter as shown.



4. The Crystal Pro is supplied with enough product water tubing for this installation. Remove the zip tie and uncoil the tubing. Find the midpoint and cut it to create the filter connection. Be sure to use the proper tube cutter when making this cut. Verify that the tubing is free of flash and is cut square before using.



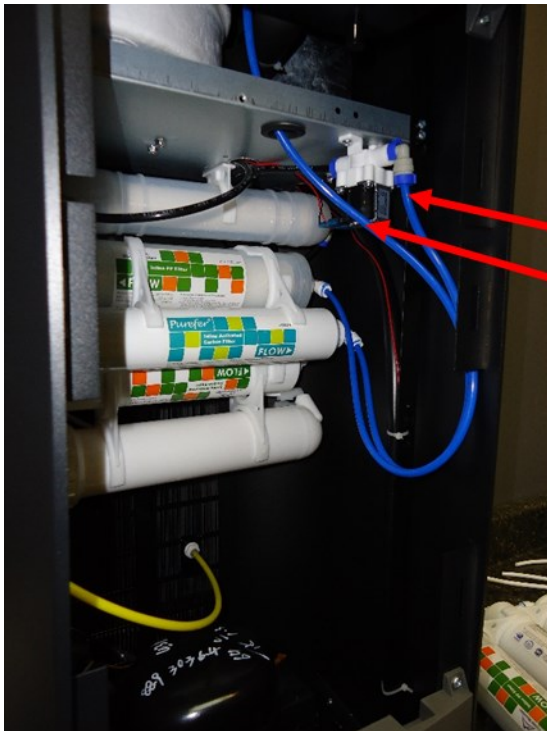
CAUTION: All connections must have the supplied locking clips installed.



## Installation Instructions: Four Stage Reverse Osmosis System

FIL-W300002

5. After all tubing, fittings, connections and water flow directions are verified, inspect the filter fit for damage before attaching it to the product water tubing as shown below. Be sure to follow the inlet and outlet flow directions as outlined in these instructions. Install the filter kit in the filter mounting clips inside the Crystal Pro as shown.



To filter kit inlet  
To filter kit outlet



6. The Crystal Pro water cooler is supplied with a 1/4" OD bulkhead fitting for making the drain connection for the R/O system. Use the supplied tubing to make this connection. **DO NOT** remove the flow restrictor when making this connection.
7. Your Crystal Pro is supplied with an electronic leak detector. If water collects in the base, the leak detector will need to be dried out completely for proper operation. **A pressure regulator must be used with this installation** (installed prior to the cooler inlet). Place the cooler into service by connecting the water and electrical supplies as outlined in the Crystal Pro Installation Manual. Check for leaks and replace the filter access door.

# Installation Instructions: Four Stage Reverse Osmosis System

## Warranty

### **FILTER AND RO MEMBRANE LIMITED WARRANTY**

Subject to the conditions and limitations described below, Crystal Mountain warrants the filter cartridges to be free from defects in material and workmanship at the time of installation when used within the operating specifications listed in the filter "Installation and Service Guide".

#### **RO MEMBRANE WARRANTY**

Membranes carry a twelve (12) month pro-rated warranty as follows: Credit 1/12th of the replacement cost for each unused month provided the system is installed and maintained according to factory instructions and the unit is operated within the specifications listed in the filter "Installation and Service Guide".

#### **CONDITIONS OF FILTER WARRANTY**

The above warranty will not apply to the filters or RO membranes that are damaged because of neglect, misuse, alteration, accident, misapplication, physical damage, fouling and/or scaling of membranes by minerals, bacterial attack, sediment, or damage caused by fire, acts of God, freezing, or hot water.

If the filters/membrane are altered by anyone other than Crystal Mountain the warranty is void. Crystal Mountain assumes no warranty liability in connection with the Reverse Osmosis or Filtration system other than specified herein. Crystal Mountain will not be liable for any consequential damages of any kind or nature due to use of Crystal Mountain products.

Crystal Mountain Products, Inc · 1000H Taylor Station Rd · Gahanna OH 43230

614.454.1618 · [www.crystalcoolers.com](http://www.crystalcoolers.com)

Form 201611002 © 2016 Crystal Mountain Products Inc.