

CRYSTAL MOUNTAIN



GLACIER
POU Water Cooler

GLACIER

POU Water Cooler



The Glacier cooler is sophistication simplified. The rounded cabinet has a stylish fluted front, giving it a classic Greek column design. Features include a removable reservoir and the sealed DryGuard™ no spill system. The Glacier is available in white or black color, and in Hot & Cold or Cook & Cold options.

Features

- Double mechanical float system for reliable operation
- Secondary float acts as a safety precaution by shutting off water supply
- Manual reset switch located at top of system for easy access
 - * Green indicates normal function
 - * Red indicates the secondary float has been activated
- Available in White and Black (select markets)
- 5 micron air filter
- ¼ " inlet tube for connection to water supply
- Polypropylene Faucet with self closing handle
- FDA approved self-closing Tomlinson faucets
- Noise dampening technology for quite operation
- Durable polyethylene cabinet comes with UV protection to prevent fading
- UL Certified to NSF372
- ENERGY STAR™ certified



GLACIER

POU Water Cooler

Performance and specifications

Point of Use system

The Point Of Use Kit uses a primary float with a secondary backup in conjunction with a 1/4" quick connect fitting with cover to protect the fitting and tubing. Easily adaptable, the double mechanical float system installs easily onto the coolers.



General

Air cooled, bottled type water cooler

Cooler Cabinet

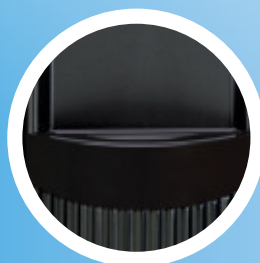
Blow molded, high density polyethylene(HDPE) resistant to cracking

Faucet Type

Polypropylene faucet with self closing handle. Hot Faucet includes a child resistant handle which requires dual action to activate.



Item		Specifications
Power rating		100 -115VAC 60Hz
Standard current		Hot & Cold: 6.2A, Cook & Cold: 1.2A
Power Consumption	Cold	Hot & Cold: 70W, Cook & Cold: 74W
	Hot	450W
Cold	Refrigerant	R134a
	Temp range	4-10° C (39.2 - 50° F)
	Capacity	2.8L (0.7 us gal)
Hot	Temp range	74-92° C (165.2 - 197.6°F)
	Capacity	2L (0.5 us gal)
Refrigerant charge		Hot & Cold: 27g(0.95 oz), Cook & Cold:25g (0.90 oz)
Product weight		Hot & Cold: 13.7kg (30.1 lb), Cook & Cold: 13.4kg (29.6 lb)
Product boxed weight		Hot & Cold: 14.8kg (32.6 lb), Cook & Cold: 14.6kg (32.1 lb)
Product dimensions		312(W) X 314 (D) X 980(H)mm
		12.2"(W) X 12.4"(D) X 38.6"(H)
Product boxed dimensions		330(W) X 340(D) X 1120(H)mm
		12.6"(W) X 13.4"(D) X 44.1"(H)
Loading quantity		20' Container : 252 Units 40' Container : 518 Units
IEC protection class		Class 1
Certifications		C-UL-US, NSF372, EnergyStar
Warranty		Five year



Removable drip tray



Hot tank power switch



Crystal Mountain Products Limited

North American Sales Office

200 Carnegie Drive, Suite 234
St. Albert, AB, T8N 5A7 Canada
Tel: 1 780 454 4545
E-mail: sales@crystalcoolers.com



www.crystalcoolers.com

Crystal Mountain has a policy of continuous development and reserves the right to change specifications without notification.

Copyright 2022 Crystal Mountain Products Limited | All Rights Reserved

