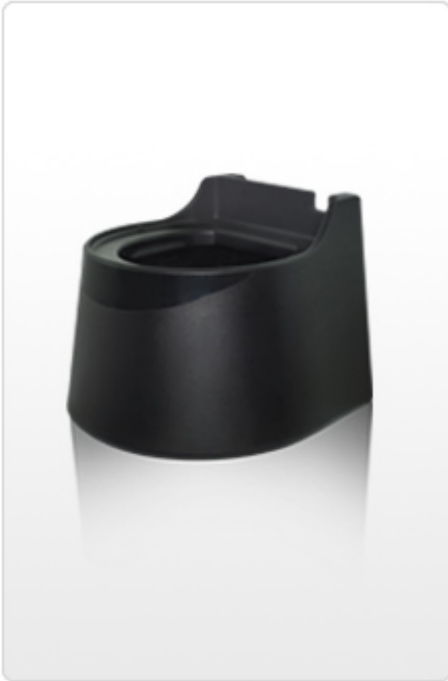


Water Cooler Base



Ergonomic..... No more bending down to pour water!

Compatible with the Glacier and Mogul series POU water coolers.

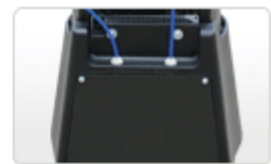
Model: Water Cooler Base



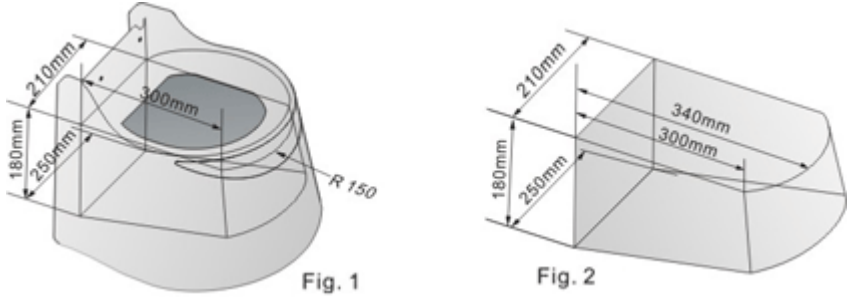
Install filter



Install tube



Install cover

ITEM	SPECIFICATIONS
Cooler Base weight	3.8 kg (8.3 lb)
Cooler Base boxed weight	4.5 kg (9.8 lb)
Filter storage dimensions	
Cooler Base dimensions	400(W) x 400(D) x 322(H)mm 15.7 "(W) x 15.7"(D) x 12.7"(H)
Cooler Base boxed dimensions	406(W) x 406(D) x 340(H)mm 15.9"(W) X 15.9"(D) X 13.4"(H)
Loading quantity	20' Container: 420 Units 40' Container: 870 Units

This Company has a policy of continuous development and reserves the right to change specifications without notification. For further clarifications, please contact us at cmsales@crystalcoolers.com