



SublimO

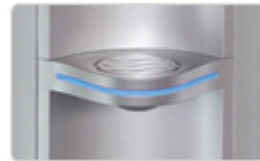
The SublimO water cooler is styled to take up little space but make a big impression! State-of-the-art appearance and a smaller (10 litre), ergonomic bottle combines with a hygienic internal water path for a compact, sanitizable water cooler built using Crystal Mountain's tested technology and materials. Perfect for domestic and small space installations, but its fabulous style makes it an end-user choice even where a bigger cooler would fit.

The new way to being more successful in our industry has finally arrived: CHANGE!!!

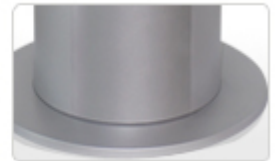
Mogul: Hot & Cold



Concealed, one-piece, hygienic faucet



Blue drip tray light feature



Stable and stylish base

Specifications:

ITEM		SPECIFICATIONS
Power rating		Single phase
		220-240VAC 50Hz
Standard current		H&C: 2.7A
Power Consumption	Cold	78W
	Hot	450W
Cold	Compressor	Single phase motor (TS24 LATG)
	Refrigerant	R-134a
	Temp range	6-3°C(43 ± 6°F)
	Temp control	Thermostat (ON 6°C ± 1.5°C, OFF -6°C ± 1.5°C)
	Capacity	2.1L (0.55 gal)
Hot	Heater	Band heater
	Temp range	75-92°C (167-197.6°F)
	Temp control	Bimetal (Auto bimetal, 85°C OFF)
	Capacity (External Heater)	1.1L (0.3 gal)
Refrigerant charge		30g (1.0 oz)
Noise (sound power level)		40dB(A)
Product weight		H&C: 12.9kg (28.4 lb)
Product boxed weight		H&C: 15.1kg (33.3 lb)
Product dimensions		200(W) X 200(D) X 1100(H)mm
		7.9"(W) X 7.9 "(D) X43.3"(H)
Product boxed dimensions		330(W) X 330(D) X 1140(H)mm
		13.0"(W) X 13.0"(D) X44.9"(H)
Loading quantity		20' Container: 238 Units
		40' Container: 504 Units
Certifications		CE, CB, ISO9001, WEEE, RoHS

This Company has a policy of continuous development and reserves the right to change specifications without notification. For further clarifications, please contact us at cmsales@crystalcoolers.com